

Automating Boot Camp and Windows Deployment

Joe Hall

Systems Support and Development Officer
Goldsmiths, University of London
Department of Computing

slack jhall
twitter iamjoehall
github joe-hall

Is dual-booting the right solution?

No!

Dual-boot deployment workflows

Windows image

Partition drive

Restore image to Windows partition

Configure Windows installation

Deploy software and configuration

Automating dual-boot deployment

Windows deployment

Windows configuration

Automating Windows deployment

~~Boot Camp~~

Deploy Studio

Winclone

Automating Windows configuration

Unattended Windows setup

System Preparation tool (Sysprep)

Answer file

```

<?xml version="1.0" encoding="utf-8"?>
<unattend xmlns="urn:schemas-microsoft-com:unattend">
  <settings pass="oobeSystem">
    <component name="Microsoft-Windows-International-Core" processorArchitecture="amd64" publicKeyToken="31bf3856ad364e35"
      <InputLocale>0809:00000809</InputLocale>
      <SystemLocale>en-GB</SystemLocale>
      <UILanguage>en-GB</UILanguage>
      <UserLocale>en-GB</UserLocale>
    </component>
    <component name="Microsoft-Windows-Shell-Setup" processorArchitecture="amd64" publicKeyToken="31bf3856ad364e35"
      <OOBE>
        <HideEULAPage>true</HideEULAPage>
        <HideLocalAccountScreen>true</HideLocalAccountScreen>
        <HideOEMRegistrationScreen>true</HideOEMRegistrationScreen>
        <HideOnlineAccountScreens>true</HideOnlineAccountScreens>
        <HideWirelessSetupInOOBE>true</HideWirelessSetupInOOBE>
        <ProtectYourPC>3</ProtectYourPC>
      </OOBE>
      <UserAccounts>
        <LocalAccounts>
          <LocalAccount wcm:action="add">
            <Password>
              <Value>Hunter2</Value>
              <PlainText>>false</PlainText>
            </Password>
            <Description>Sys Admin</Description>
            <DisplayName>Sys Admin</DisplayName>
            <Group>Administrators</Group>
            <Name>sadmin</Name>
          </LocalAccount>
        </LocalAccounts>
      </UserAccounts>
    </component>
  </settings>
  <settings pass="auditSystem">
    <component name="Microsoft-Windows-PnpCustomizationsNonWinPE" processorArchitecture="amd64" publicKeyToken="31bf3856ad364e35"
      <DriverPaths>
        <PathAndCredentials wcm:action="add" wcm:keyValue="1">
          <Path>C:\Drivers</Path>
        </PathAndCredentials>
      </DriverPaths>
    </component>
  </settings>
  <cpu:offlineImage cpi:source="wim:c:/users/sadmin/desktop/install.wim#Windows 10 Education" xmlns:cpi="urn:schemas-microsoft-com:unattend-cpi"
</unattend>

```

Automating Windows configuration

Unattended Windows setup

System Preparation tool (Sysprep)

Answer file

Windows System Image Manager

Windows Assessment and Deployment Kit

Answer file

Automate Out Of Box Experience (OOBE)

Set locale

Microsoft-Windows-International-Core settings: InputLocale, SystemLocale, UILanguage, and UserLocale.

Set Computer Name

Microsoft-Windows-Shell-Setup | ComputerName

Create a user account

Microsoft-Windows-Shell-Setup | UserAccounts

Answer file

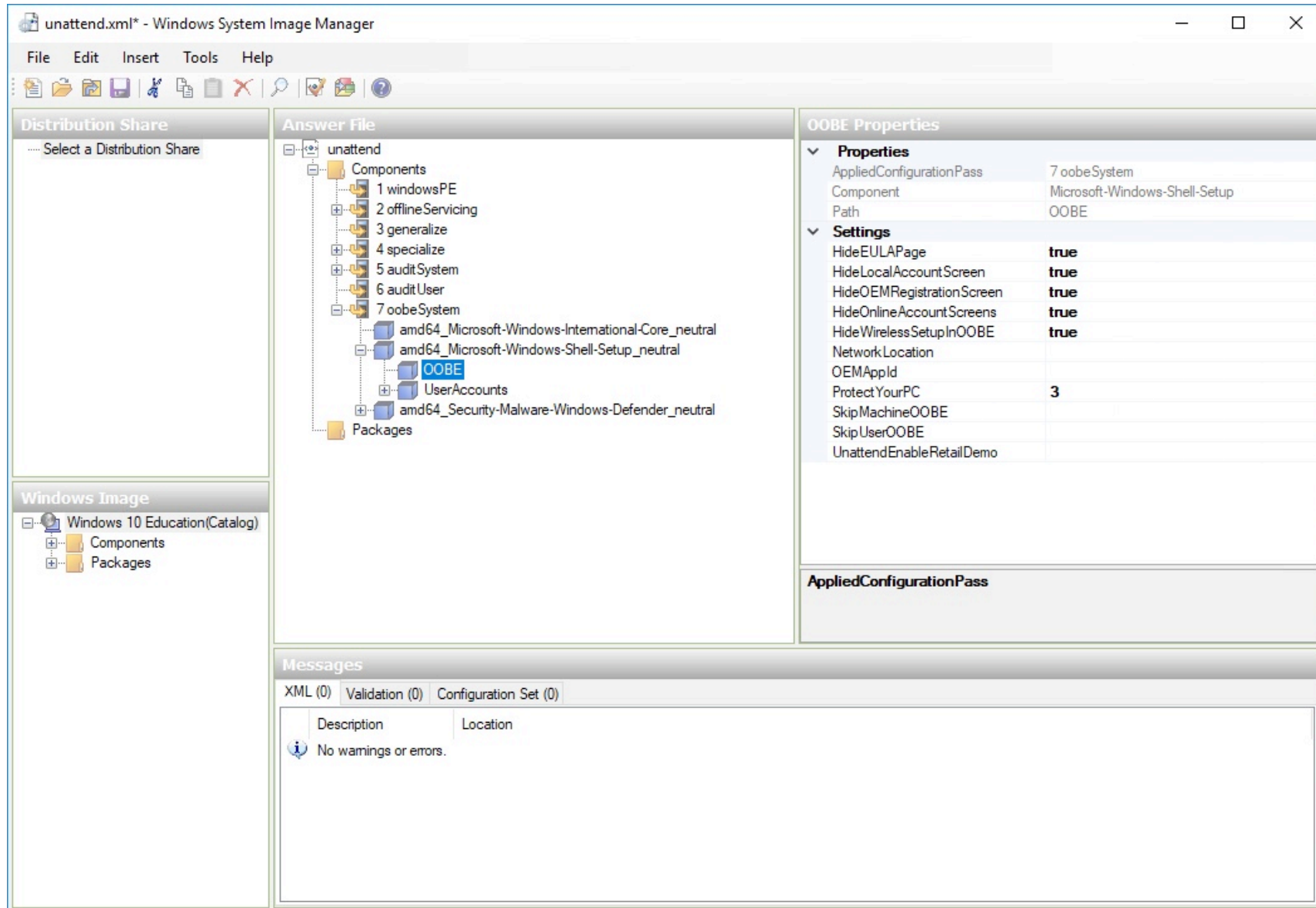
Automate Out Of Box Experience (OOBE)

Skip OOBE screens

Microsoft-Windows-Shell-Setup | OOBE | HideEULAPage,
HideOEMRegistrationScreen, HideOnlineAccountScreens,
and HideWirelessSetupInOOBE.

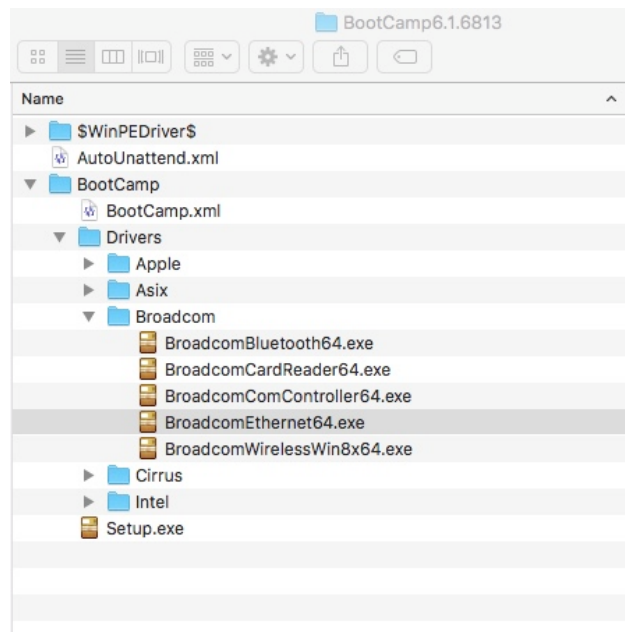
Configure Express Settings

Microsoft-Windows-Shell-Setup | OOBE | ProtectYourPC



Ethernet drivers

Extract from Windows Support Software
Boot Camp Assistant > Action >
Download Windows Support Software



Ethernet drivers

Extract from Windows Support Software

Boot Camp Assistant > Action >

Download Windows Support Software

Add to location on build machine

Add answer file component

Ethernet driver location

Microsoft-Windows-PnpCustomizationsNonWinPE | DriverPaths

Answer file

Additional components

Add Windows Product Key

Microsoft-Windows-Shell-Setup | ProductKey

Set time zone

Microsoft-Windows-Shell-Setup | TimeZone

Bind to Active Directory domain

Microsoft-Windows-UnattendedJoin

Answer file

Validate

Windows Assessment and Deployment Kit

Copy to build machine

C:\Windows\System32\Sysprep\unattend.xml

SetupComplete.cmd

C:\Windows\Setup\Scripts\

Sysprep

Pre-Sysprep image

Run Sysprep and shutdown

```
C:\Windows\System32\Sysprep\sysprep.exe  
/generalize /oobe /shutdown /unattend:unattend.xml
```


Winclone

Take image of Windows partition

Create installer package

Winclone postflight script

Determines Windows Computer Name

Writes Computer Name to answer file

Automating Windows configuration

Software and configuration deployment

Microsoft SCCM and group policy

PDQ Deploy

Chocolatey

WPKG

Software and configuration deployment

Windows Support Software

ProductVersion in BootCamp/BootCamp.xml

Silent installation

`msiexec.exe /i`

`\path\to\BootCamp\Drivers\Apple\BootCamp.msi /qn`

Software and configuration deployment

Apple UK Keyboard

Keyboard Layout Code - a0000809

Scheduled maintenance window

Set boot drive to macOS

"C:\Program Files\Boot Camp\Bootcamp.exe" -StartupDisk

Mac hardware suitability

SSD

Windows 10 only

Microsoft support for Windows 10

Versions 1507 and 1511 no longer supported

Version 1607 'tentatively' supported until March 2018

Automating Boot Camp and Windows Deployment

Joe Hall

Systems Support and Development Officer
Goldsmiths, University of London
Department of Computing

slack jhall
twitter iamjoehall
github joe-hall