

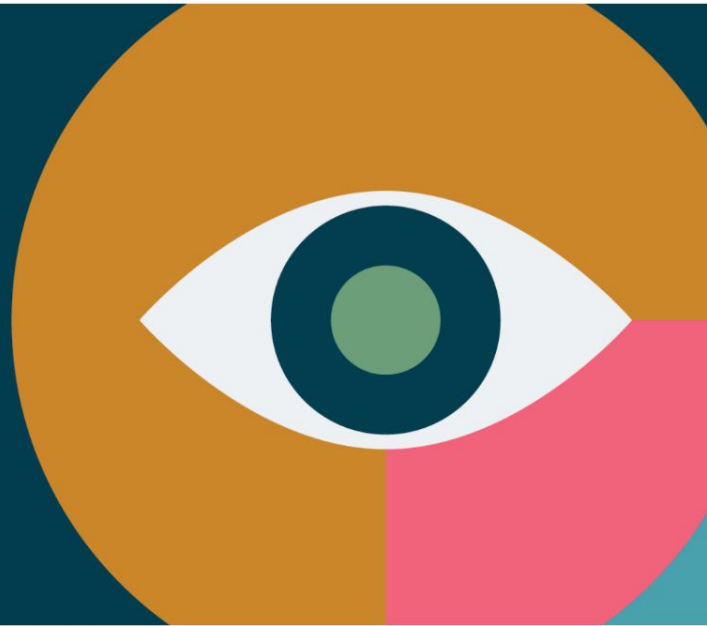
TBC

(because deadlines are hard...)

Hi I'm Steve - Welcome to Thoughtworks London

Where extra **insight** overcomes ordinary

[Explore Looking Glass report](#) >



We are a leading global technology consultancy that integrates strategy, design and software engineering to enable enterprises and technology disruptors across the globe to thrive as modern digital businesses.

Macs - lots of Macs...



But we have a secret...

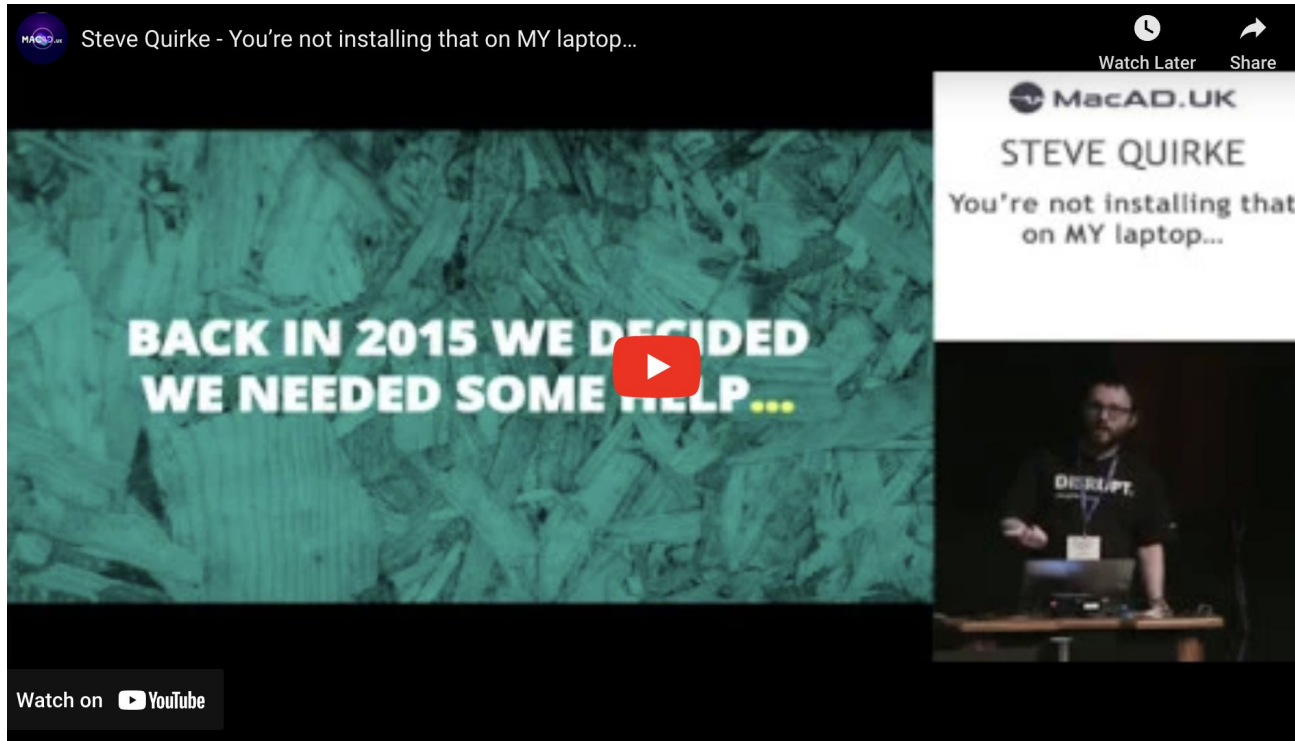
(are we recording this?)



Who am I?

TechOps Identity - looking after Okta, Google and the "Identity" of
devices

Ancient History?



We are TechOps...

Cloud first:

Okta / Zoom / Google
Workspace etc

And that's great - but
where does Windows fit
in a Cloud First world?

(it doesn't really - at least not at
Thoughtworks)



Thoughtworks Announces Pricing of Initial Public Offering

 [News archive](#)

September 14, 2021 - Chicago

Hexnode? Workspace One?
InTune? Something else?

Something Else!



How do I manage Windows devices with Google?



Google Search

google account

google calendar

google home

google workspace



Search: ☒ the web ☐ pages from the UK

[Advanced Search](#)

[Feedback](#)

[Language Tools](#)

[Advertising Programmes](#) - [Business Solutions](#) - [About Google](#) - [Go to Google.com](#)

©2008 [Google](#) - [Chrome Extension](#) - [Media Of](#)

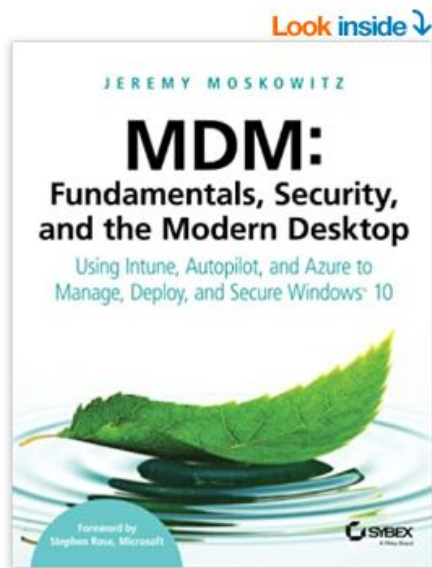
Overview: Enhanced desktop security for Windows

As an administrator, you can set up company-owned and personal Microsoft Windows devices to use Google's single-sign on (SSO) access security, push Windows settings, and wipe device data remotely. Enhanced desktop security for Windows has two complementary features that can be set up together or individually.

For an introduction to some product features, check out the following video:



Although this counts as using Amazon, and not Google:



MDM: Fundamentals, Security, and the Modern Desktop: Using Intune, Autopilot, and Azure to Manage, Deploy, and Secure Windows 10 Paperback – 12 July 2019

by [Jeremy Moskowitz](#) (Author)

★★★★☆ 115 ratings

[See all formats and editions](#)

Kindle Edition

£27.88

[Read with Our Free App](#)

Paperback

£29.35 [prime](#)

4 Used from £16.84

10 New from £27.40

The first major book on MDM written by Group Policy and Enterprise Mobility MVP and renowned expert, Jeremy Moskowitz!

With Windows 10, organizations can create a consistent set of configurations across the modern enterprise desktop—for PCs,



It all seems
strangely familiar...



Microsoft Push Notifications

A management
specification published
online...

Configuration Service Provider options (CSP)

Xml based config files

Based on OMA-DM / SyncML

GUI for common
settings



Windows settings

Windows management setup

Set Windows security settings



Windows device management

Disabled

Applied at 'quirke.org'

Account settings

Manage account settings for Windows devices



Administrative privileges

Manage local administrative access to devices: Not configured

Applied at 'quirke.org'

Windows Update settings

Configure automatic updates



Windows automatic updates

Windows Update: Not configured

Applied at 'quirke.org'

BitLocker settings

Configure drive encryption



BitLocker drive encryption

Drive encryption: Not configured

Applied at 'quirke.org'

Custom settings



Configure other settings and features

Microsoft Witchcraft for less common settings

(so, a bit like MCX on macOS currently? Ish?)

Configuration Service
Provider(s)

Filter by title

Firewall DDF file

- > HealthAttestation
- > LanguagePackManagement
- > LAPS
- > MultiSIM
- NAP
- NAPDEF
- > NetworkProxy
- > NetworkQoSPolicy
- > NodeCache
- > Office
- > PassportForWork
- > PDE
- > Personalization
- > PrinterProvisioning
- Provisioning
- PXLOGICAL
- > Reboot
- > RemoteFind
- > RemoteWipe
- > Reporting
- > RootCATrustedCertificates
- > SecureAssessment
- SecurityPolicy
- > SharedPC
- > Storage
- > SUPL
- > SurfaceHub
- > TenantLockdown

MdmStore/DomainProfile/DisableStealthMode

Scope	Editions	Applicable OS
✓ Device ✗ User	✗ Home ✓ Pro ✓ Enterprise ✓ Education ✓ Windows SE	✓ Windows 10, version 1709 [10.0.16299] and later

Device

Copy

./Vendor/MSFT/Firewall/MdmStore/DomainProfile/DisableStealthMode

This value is an on/off switch. When this option is false, the server operates in stealth mode. The firewall rules used to enforce stealth mode are implementation-specific. The merge law for this option is to let the value of the GroupPolicyRSoPStore win if it is configured; otherwise, the local store value is used.

Description framework properties:

Property name	Property value
Format	bool
Access Type	Get, Replace
Default Value	false
Dependency [EnableFirewall]	Dependency Type: DependsOn Dependency URI: Vendor/MSFT/Firewall/MdmStore/DomainProfile/EnableFirewall Dependency Allowed Value: true Dependency Allowed Value Type: ENUM

Allowed values:

Value	Description
false (Default)	Use Stealth Mode.
true	Disable Stealth Mode.

Custom OMA-URI

Use custom settings to add device settings and features that don't have configuration controls in the Admin console. [Learn more](#)

Name

EnableFirewall

A unique name makes it easier to identify

Enter a keyword to search for the OMA-URI

./Vendor/MSFT/Firewall/MdmStore/DomainProfile/EnableFirewall

OMA-URI is case sensitive

Boolean ▾

☒ True

☐ False

The data type that you use affects the value that you can set

Description (optional)

Custom OMA-URI

Use custom settings to add device settings and features that don't have configuration controls in the Admin console. [Learn more](#)

Name

DisableStealthMode

A unique name makes it easier to identify

Enter a keyword to search for the OMA-URI

./Vendor/MSFT/Firewall/MdmStore/DomainProfile/DisableStealthMode

OMA-URI is case sensitive

Boolean ▾

☒ True

The data type that you use affects the value that you can set

The ability to install
packages in a specific
format (MSI)

The downsides...

No autopilot :(

Management by OU

And also by user rather than device

The API is lacking...

:(

Google customer?

Do me a favour? Upvote my requests?



An API for exporting software discovery information from managed Windows devices

Posted on 09-02-2021 05:48 PM

[Share this topic](#)

squirke

Explorer

[Idea Options ⋮](#)

STATUS

[Open](#)

5



0



18

Our end-users are administrators on their Windows 10 machines (by design!) - and as a result, we're interested in capturing a picture of installed software data, to hunt for malware/unwanted applications as well as checking we remain in compliance with licencing agreements.

We can see that software discovery information is viewable in the web UI, but there doesn't appear to be an API that shows installed software on a device.

Idea Labels

[MDM](#)

5 Upvotes

[Comment](#)

The result?

We can push a baseline to Windows devices to ensure compliance



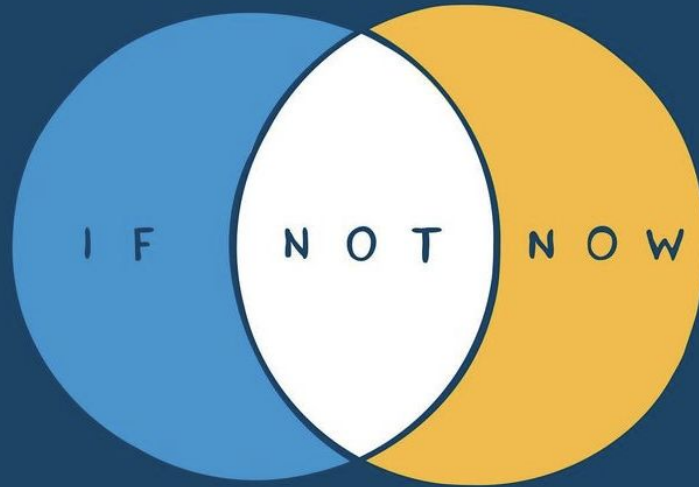
nathanwpylestrangeplanet



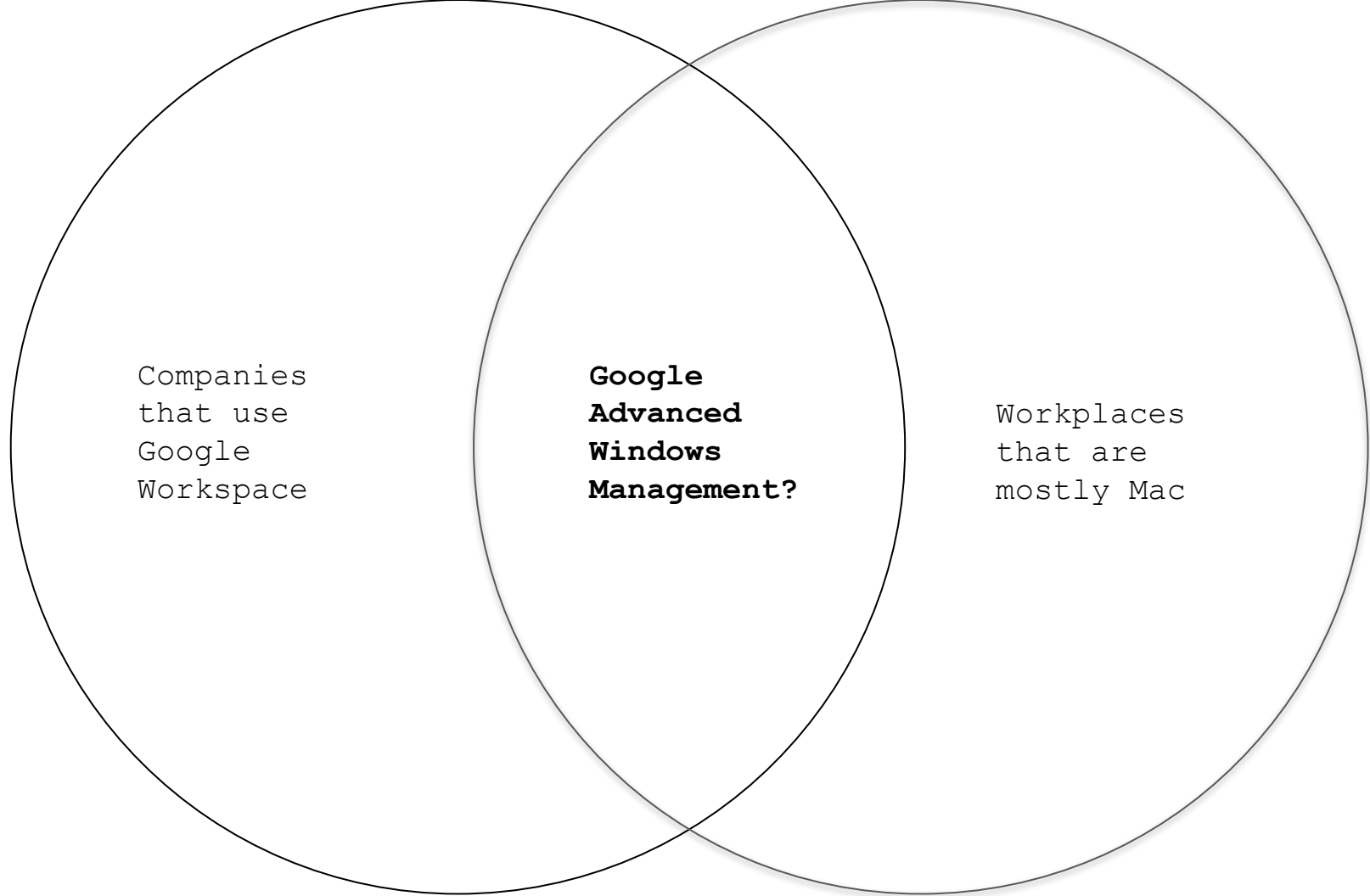
Following



1/4



V E N N



Thanks

 @squirke

 blog.quirke.org

